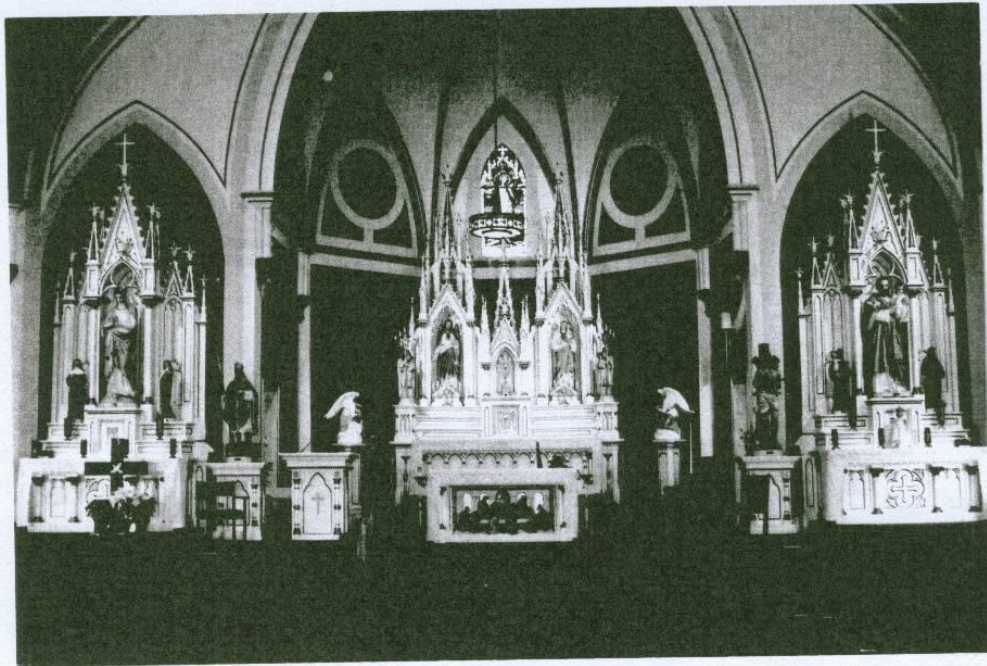


St. Sebastian Catholic Church

St. Sebastian, Ohio



Religious Education Handbook

CLASS DAYS AND TIMES

Religious education classes for Grades 1-12 shall be on Wednesday evenings from 7pm to 8pm.

ATTENDANCE

Regular, participative attendance in classes is vital if students are to move forward in the knowledge and appreciation of their faith. Thus, it is very important for all students to be present and on time for each session.

If it is known that a student will be absent, this needs to be communicated to the teacher or Coordinator PRIOR to the class.

Families requiring an excused pattern of absences need to make this known to the Coordinator.

If a parent has NOT called the teacher or Coordinator prior to an absence then the Coordinator will contact the parent after the missed class.

ABSENTEEISM

Students will be held responsible for all missed work. Parents/guardians should make necessary arrangements with their child's teacher if absences occur.

HOMEWORK

A teacher may assign homework. Parents/guardians are expected to see that their children complete assignments. Homework should NOT take more than one hour per week.

CLASS CANCELLATION

No School - No Religion!

MASS PARTICIPATION

All students enrolled in the religious education program are expected to participate on a weekly basis in the Sunday celebration of the Eucharist.

In addition, each student will be expected to be present and involved when his/her class is participating in a special way in the Eucharist.

ARRIVAL AND PICK-UP TIMES

Students should not arrive more than fifteen minutes before class starts and should be picked up at dismissal time (no later than 8:15pm) unless prior arrangements are made with the Coordinator of Religious Education.

MEDICAL EMERGENCY

In case of a minor illness or injury, the student will be treated at the rectory and the parent/guardian will be notified when they come to pick up their child. If there is a severe illness or injury, an ambulance will be called for the child and the parent/guardian or persons designated by the parent/guardian will be notified immediately.

CHILD ABUSE

The Coordinator of Religious Education is required by the Ohio Revised Code and Archdiocesan Policy on Child Protection to report suspected or actual child abuse or neglect to the proper authorities.

OBEDIENCE

All students will obey instructions of the Coordinator, Teachers, Aides and Substitutes.

DISCIPLINE

While no person can look into another's heart/soul and measure their love of God, there are some behavioral characteristics that can indicate the intensity of a person's love of their neighbor. Teachers are responsible for establishing the rules and consequences for their own classrooms. In general, students learning opportunities and/or requires a disproportionate amount of time, that student will be referred to the Coordinator of Religious Education.

If there are continued behavioral problems, the parents/guardians will be contacted. If the behavioral problems are not remedied, then the student will be expelled. For most severe behavioral problems are not remedied, then the student will be expelled.

DISCIPLINE (CONT.)

For most severe behavioral problems the student may be immediately expelled by the Coordinator of Religious Education, with immediate notification of the parent/guardian.

EXPULSION

A student may be expelled from the religious education program for the following, nonexclusive reasons:

- 1) When a student's behavior is of a serious nature, or constantly disruptive;
- 2) When the student resists all attempts at correction by the teacher, Coordinator and the parent/guardian;
- 3) When the student has a negative impact on the learning environment of the classroom so as to diminish the other students' opportunities to learn.

SNACKS

Food and Drinks should not be brought to class unless of a party or celebration that has been okayed by the teacher.